

PART OF THE NW.1/4, OF SECTION 28, T.6N., R.2W., S.L.B. & M.

825

TAYLOR LANDING PHASE 3

IN WEBER COUNTY

SCALE 1" = 200'

TAXING UNIT: 514

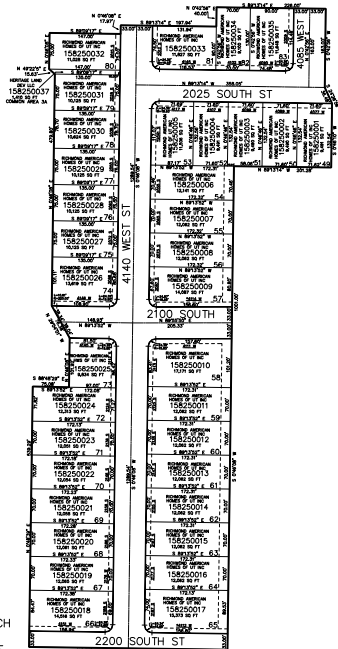
SEE PAGE 78-4

SEE PAGE 78-4

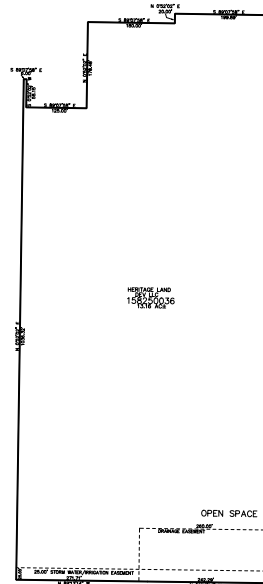
SEE PAGE 78-4

SEE PAGE 78-4

10' UTILITY & DRAINAGE EASEMENTS EACH
SIDE OF PROPERTY LINES AS INDICATED
BY DASHED LINES EXCEPT AS OTHERWISE
SHOWN.



SEE PAGE 78-4



FOR COMPLETE SURVEY DATA SEE
ORIGINAL DEDICATION PLAT IN
BOOK 96, PAGE 20,21 OF RECORDS.

*AFFIDAVIT OF ADDRESS E#3303018